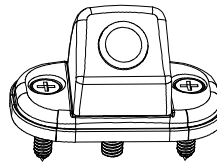




NTSC SYSTEM VCMS14L/R



VCMS14L/R Features:

- High Performance CMOS Sensor
- IR LED Low Light Enhancement
- Waterproof
- Compact Size

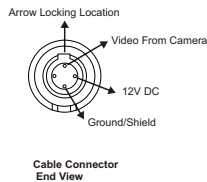
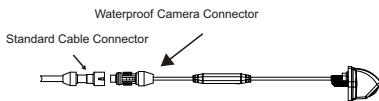
Contents:

Camera

Bracket

Hardware Kit

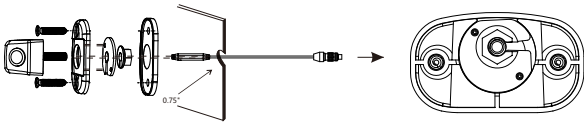
Installation and Pin Out



Specifications

| | |
|-----------------------|---|
| Mounting Type | External Type |
| Image Sensor | 1/3" CMOS Sensor |
| Resolution | 600TVL |
| Water Resistance | IP69K |
| View Angle | 125°(H), 111°(V), 153°(D) |
| Dimension | 58(W)*27(H)*33.5(D)mm 2.28(W)*1.1(H)*1.32(D)inch |
| Operation Temperature | -20°C ~ +70°C |
| Weight | Approx.0.3kg/0.66 |

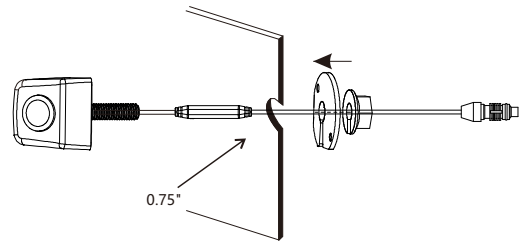
Mounting Plate Method



Instruction:

1. Assemble camera onto mounting plate
 - a. Remove 3M film from the mounting plate
 - b. Passthrough the wire harness and position camera to mounting plate
 - c. Mount the slotted washer on the back of the camera bracket according to the diagram, screw on the nut and tighten well with socket or wrench
 - d. Fit the gasket on the back of the camera assembly
2. Pass CEC connector through 0.75" diameter hole in the vehicle body
3. Attach the camera assembly to the vehicle body using the included self tapping screws

Direct Mount Method



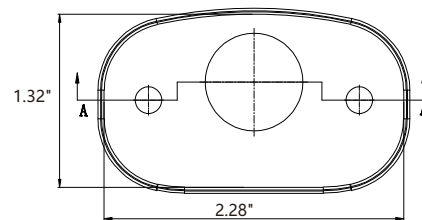
Instruction:

1. Mount the slotted washer & screw the nut after the camera attached to vehicle body
2. Caulk around the perimeter of the camera after the camera attached to the vehicle body.

Camera to bracket hardware

| Specifications | Q'ty | Specifications | Q'ty |
|--------------------------|------|----------------|------|
| Self tapping screw M5*16 | 2 | Gasket | 1 |
| Slotted Washer | 1 | Nut | 1 |
| 3M Tape | 1 | Mounting Plate | 1 |

Mounting Plate Hole Dimensions



UNIT: Inch