



JWR250 Wired Remote Installation and Operation Instructions

INTRODUCTION

Thank you for choosing a Jensen product. The JWR250 Marine Wired Remote Control allows you to control basic functions of most Jensen Marine JMS series radios, including power, mode, volume, tuning and CD, MP3, iPod and satellite radio operation.

FEATURES

- Compatible with JENSEN Marine JMS Series radios with remote control capability ONLY
- Waterproof design (IPX6 Rated)
- Conformal Coated circuit boards
- White LED backlit controls and LCD
- Full function sunlight readable display (positive type LCD)
- UV resistant finish (meets ASTM D4329 standards) resists yellowing in sunlight
- Corrosion resistant materials (meets ASTM B117)
- Panel mount with removable trim ring
- 18 ft. extension cable included
- FCC/CE certified

INSTALLATION

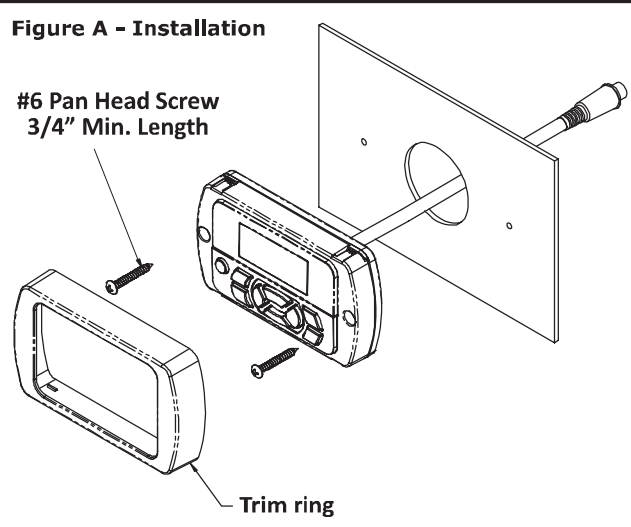
1. Choose a mounting location on the instrument panel that will allow enough room behind the panel to run the wired remote cables to the existing radio.
2. Cut a hole in the instrument panel using the supplied template (See "Mounting Template" on page 3). At least 1" depth is needed to mount the remote control.

IMPORTANT! Do not mount unit where it can be submerged.

3. Insert the remote control into the hole and then secure with two #6 Pan Head Screws, at least 3/4" long, illustrated in Figure A.

Figure A - Installation

#6 Pan Head Screw
3/4" Min. Length



Trim ring

WIRING

Once the remote has been mounted, route the cable from the remote and connect the cable to the radio. Note the connector polarity on the extension cable. The 18 foot extension cable may be used to connect the remote to the radio. Additional extension cables (JWREXT) may be purchased and used to extend the reach of the remote up to 32 feet.

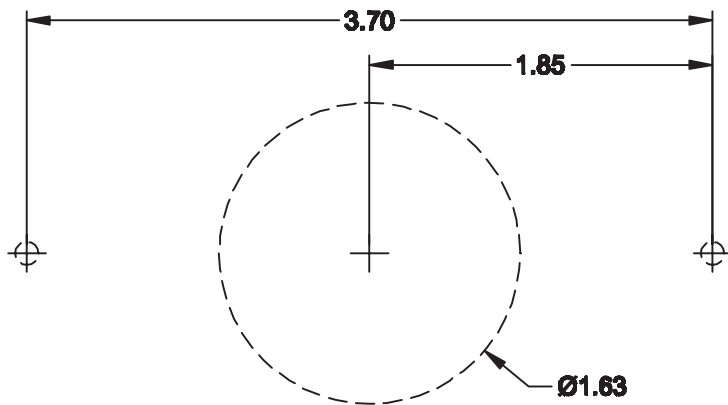
IMPORTANT! When connecting the cables, be sure to route the extension cable away from sharp objects, corners, and places where it might get pinched, as this could affect performance and cause damage to the unit. Up to two more remote controls can be added with a "Y" cable adapter (JWRYCBL).

OPERATION

		AM/FM/WB Tuner		CD	MP3 Playback Mode		iPod		Sirius	
Control	Action	Default Mode	While in PTY Search Mode	Mode	Main Mode	While in MP3 File Menu	Main Mode	While in iPod Playlist Menu	Main Mode*	While in Category Tuning Mode
POWER	Press	Power On / Off	Power On / Off	Power On / Off	Power On / Off	Power On / Off	Power On / Off	Power On / Off	Power On / Off	Power On / Off
	Hold*	---	---	---	---	---	---	---	---	---
MODE ENTER	Press	Select Next Playback Mode	Accept PTY Type and Start Search	Select Next Playback Mode	Select Next Playback Mode	Accept Folder or file and start play	Select Next Playback Mode	Accept file and start play	Select Next Playback Mode	Accept Channel
	Hold*	---	---	---	---	Toggle Playlist / Directory	---	---	---	---
BAND WB	Press	Preset Bank Change	Preset Bank Change	Select Tuner	Select Tuner	Select Tuner	Select Tuner	Select Tuner	Preset Bank Change	Preset Bank Change
	Hold	Select Weather Band	Select Weather Band	Select Weather Band	Select Weather Band	Select Weather Band	Select Weather Band	Select Weather Band	Select Weather Band	Select Weather Band
VOL+ UP	Press	Volume Increase	List PTY Previous	Volume Increase	Volume Increase	List Scroll Previous	Volume Increase	Playlist Scroll Previous	Volume Increase	Category List Up
	Hold	---	---	---	---	---	---	---	---	---
VOL- DN	Press	Volume Decrease	List PTY Next	Volume Decrease	Volume Decrease	List Scroll Next	Volume Decrease	Playlist Scroll Next	Volume Decrease	Category List Down
	Hold	---	---	---	---	---	---	---	---	---
CAT DISP	Press	Clock Display Toggle	Exit PTY Search	---	Display Toggle Artist / Song/ etc.	Go Back	Display Toggle Artist/ Song, etc.	Go Back	Display Toggle for Artist/ Song, etc.	---
	Hold	Choose PTY Search Mode	---	---	Enter MP3 File Menu	---	Enter iPod Playlist Menu	---	Enter Category Tuning Mode	---
> MUTE	Press	Mute Enter	Mute Enter	Pause Enter	Pause Enter	Category/ Song Play	Pause Enter	Category/ Song Play	Mute Enter	Mute Enter
	Hold	---	---	---	---	---	---	---	---	---
<<	Press	Tune Decrement	Tune Decrement	Track Decrement	Track Decrement	Track Decrement	Song Decrement	Song Decrement	Channel Down	Channel Down in Current Category
	Hold	Tune Seek Down	---	Rewind	Rewind	Rewind	Rewind	Rewind	---	---
>>	Press	Tune Increment	Tune Increment	Track Increment	Track Increment	Track Increment	Song Increment	Song Increment	Channel Up	Channel Up in Current Category
	Hold	Tune Seek Up	---	Fast-Forward	Fast-Forward	Fast-Forward	Fast-Forward	Fast-Forward	---	---

iPhone, iPod nano and iPod touch are trademarks of Apple Inc. registered in U.S.A. and other countries. “Made for iPod” and “Made for iPhone” mean that an electronic accessory has been designed to connect specifically to iPod or iPhone, respectively, and has been certified by the developer to meet Apple performance standards. Apple is not responsible for the operation of this device or its compliance with safety and regulatory standards. Please note that the use of this accessory with iPod or iPhone may affect wireless performance.

MOUNTING TEMPLATE



ASA Electronics Corporation
www.asaelectronics.com
www.jensenmarinedirect.com
©2017 ASA Electronics Corporation
v.100517