



6.5" Waterproof Coaxial Speaker



MSX65

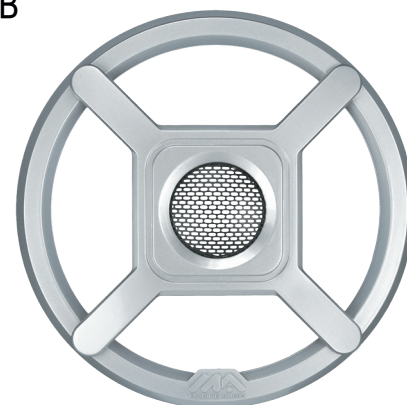


RGMACX1SB



Selectable
Blue or White
LED Light Kit

UMCX650LK1



RGMACX1SS



MS650



RGMACX1HW

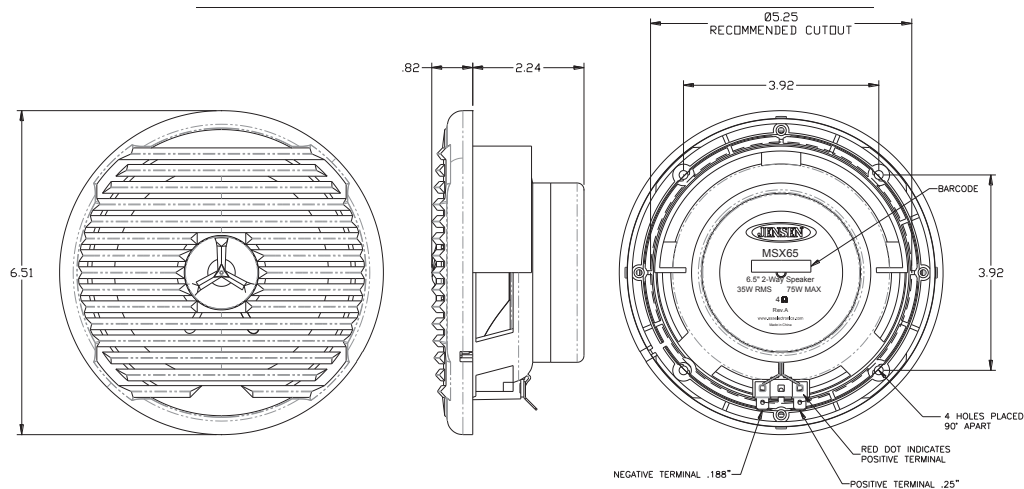
Features and specifications subject to change without notice.

ASAelectronics
THE MOBILE ELECTRONICS COMPANY SINCE 1977
2602 Marina Drive • Elkhart, IN 46514
www.asaelectronics.com

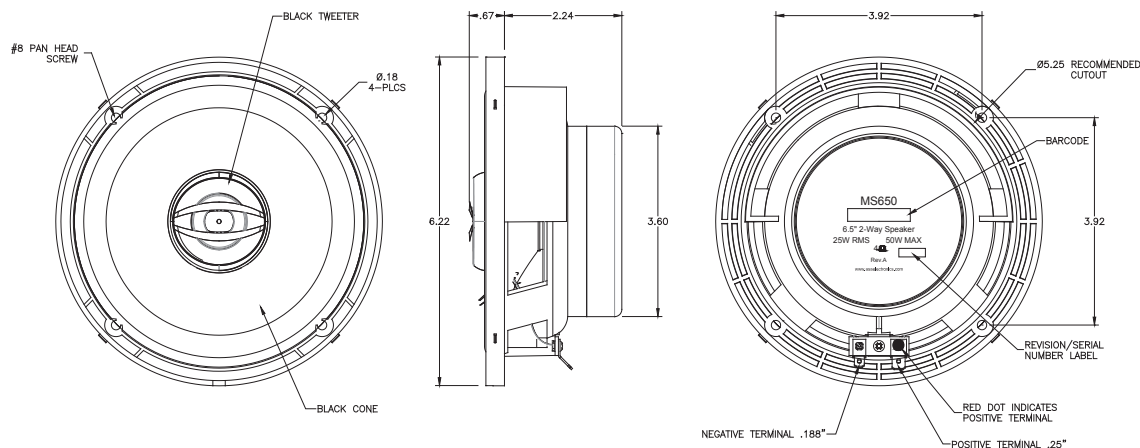


6.5" Waterproof Coaxial Speaker

MSX65



MS650



MSX65

MS650

Specifications:

General Specifications:

Woofer Size	6.5"	
Woofer Material	Poly-propylene	
Tweeter Type	Dome	
Tweeter Material	Silk	
Voice Coil Size	1"	
Magnet Weight	11 oz	
Mounting Depth	2.3"	
Hole Size	5.25"	
Impedance	4 Ω	
Temperature Range	-30°C - 70°C	-22°F - 158°F
Max RH	100%	
Terminal Size	Positive - 1/4"	Negative - 3/16"

Performance Specifications:

Frequency Response	65 Hz - 20 KHz	
RMS Power Range	35W	
Max Power	75W	
SPL @ 1 W/ 1 M	88 dB	
Resonant Frequency	75 Hz	

Specifications:

General Specifications:

Woofer Size	6"	
Woofer Material	Poly-propylene	
Tweeter Type	Dome	
Tweeter Material	Mylar	
Voice Coil Size	1" ASV	
Magnet Weight	8.8 oz	
Mounting Depth	2.4"	
Hole Size	5.0"	
Impedance	4 Ω	
Temperature Range	-30°C - 70°C	-22°F - 158°F
Max RH	100%	
Terminal Size	Positive - 0.250"	Negative - 0.205"

Performance Specifications:

Frequency Response	50 Hz - 20 KHz	
RMS Power	25W	
Max Power	50W	
SPL @ 1 W/ 1 M	86 dB	
Resonant Frequency	57 Hz	