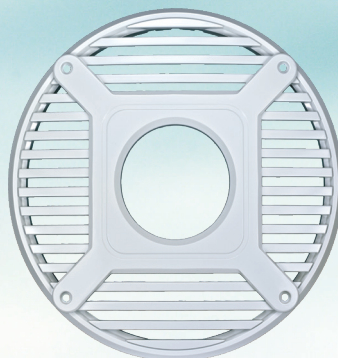
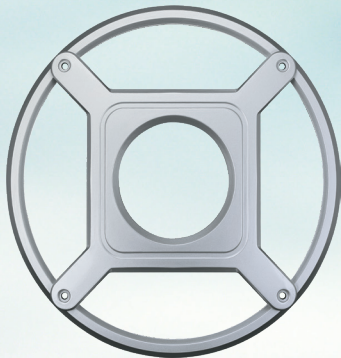




# Universal Subwoofer [MSW10RTL]

## KEY FEATURES:

- 500 watts (250W RMS)
- Sealed Design
- Speaker impedance: 3.2 ohms
- Magnet Weight: 40.7 oz.
- Matt Black PP cone
- Black Ferrite magnet
- Santoprene surround
- Nickel plated copper terminals and insulated tinsel leads
- Meets ASTM B117 salt/fog testing specifications
- 9" mounting hole
- 4.8" mounting depth
- Kit includes one subwoofer, one silver grille, one black grille, one white grille, and one light kit.

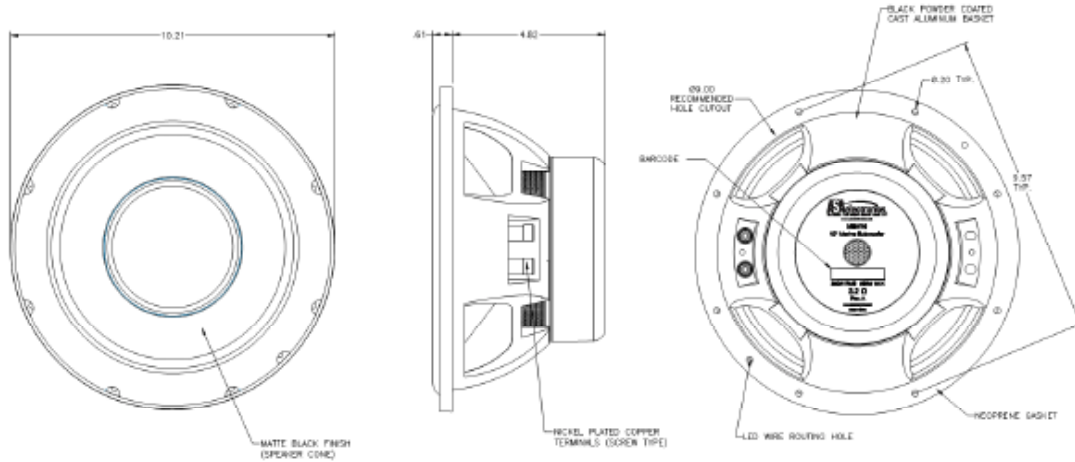


MARINE CERTIFIED

**asa**  
ELECTRONICS  
2602 Marina Drive • Elkhart, IN 46514  
[www.asaelectronics.com](http://www.asaelectronics.com)



# Universal Subwoofer [MSW10RTL]



## **Specifications:**

### **General Specifications:**

Woofers Size	10"	
Woofers Material	Poly-propylene	
Surround Material	Rubber	
Voice Coil Size	2"	
Magnet Weight	40.7 oz	
Mounting Depth	4.83"	
Hole Size	9"	
Impedance	3.2 Ω	
Temperature Range	-30°C - 70°C	-22°F - 158°F
Max RH	100%	
Terminal Size	Accepts up to 8AWG	

### **Performance Specifications:**

Frequency Response	20 Hz – 1 KHz	
RMS Power Range	250 W	
Max Power	500 W	
SPL @ 1 W/ 1 M	85 dB	
Resonant Frequency	31 Hz	