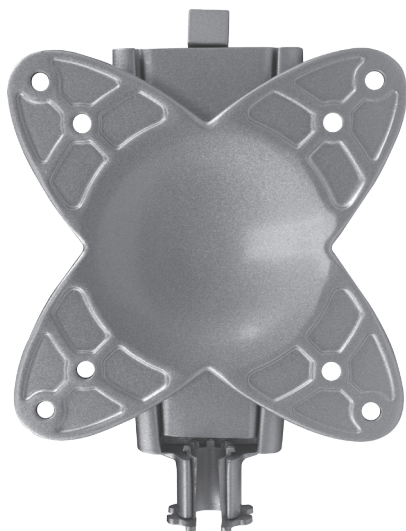




DESIGNED TO MOVE [YOU]®

# MAF Brackets



## **MAF10 Fixed, Low-Profile Flat Panel LCD TV Wallmount Bracket**

The MAF10 is a fixed aluminum Flat Panel LCD TV Wall Mount Bracket with a low-profile design to secure the TV close to the mounting surface, adding only 1.1" to the depth of the screen. This Fixed, Low-Profile Flat Panel LCD TV Wall Mount Bracket is designed for flat panel TV sizes between 13" and 27".



## **MAF30 Fixed, Low-Profile Flat Panel LCD TV Wallmount Bracket with Swing Arm Extension**

The MAF30 is an aluminum Flat Panel LCD TV Wall Mount Bracket that has tilt, swivel and pan capabilities which provide a full-range of motion. This Flat Panel LCD TV Wall Mount Bracket with Single Swing Arm Extension is designed for flat panel LCD TV sizes between 13" and 27".

MARINE ENTERTAINMENT

Features and specifications subject to change without notice.