

# Voyager®

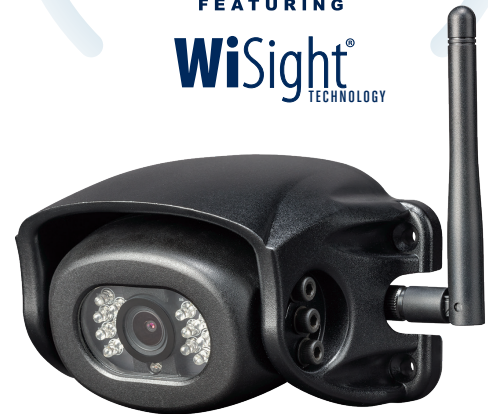
Wireless Camera System Prewired for Power

## WVHS541

## Digital Wireless Observation Systems

FEATURING

**WiSight®**  
TECHNOLOGY



### PRODUCT FEATURES:

#### Monitor (WVOM541AP)

- Large, 5.6" display
- Supports up to four wireless cameras (WVCMS130AP) and one wired Voyager camera simultaneously
- Auto-Pairing capability allows monitor to be paired with any of the (up to) four wireless cameras (WVCMS130AP) with the touch of a button
- Strong signal transmits through and around objects up to 60 feet away
- Built-in speaker
- Suction cup mount and 12V DC plug included

#### Camera (WVH100)

- 12VDC
- High-performance color optics
- CMOS sensor
- IR LED low-light assist
- Waterproof
- Built-in microphone
- Wide-angle view



If this plate is on the back of your RV, you are

**PREWIRED  
FOR  
Voyager®**

NOTE: This system is only compatible with Voyager prewired vehicles.

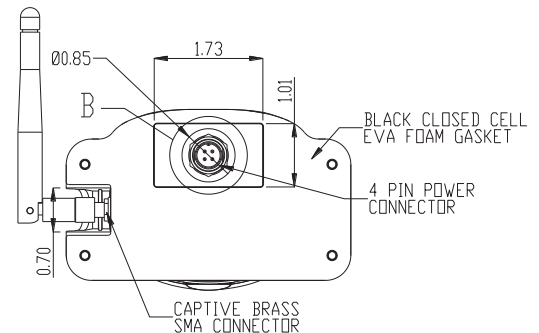
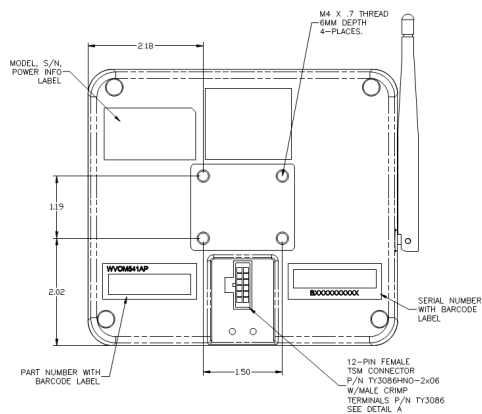
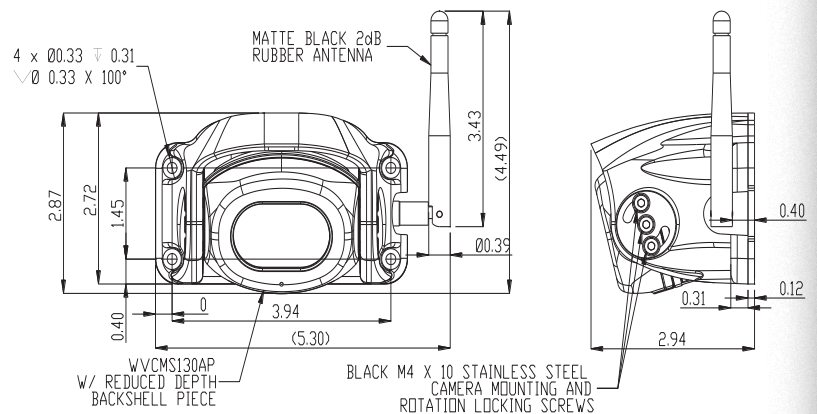
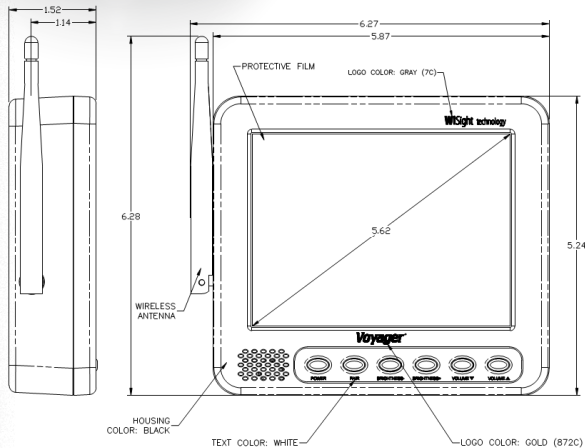
EXPAND your vision™

**asa**  
ELECTRONICS®  
2602 Marina Drive • Elkhart, IN 46514  
[www.asaelectronics.com](http://www.asaelectronics.com)

# Voyager®

Wireless Camera System Pre-wired for Power

# WVHS541



## Specifications

Power System	12VDC
Operating Voltage Range	10 ~ 14V
Power Consumption (MAX)	540 mA
Operating Temperature Range	-4°F to 149°F
Storage Temperature Range	-40°F to 185°F
Operating Relative Humidity	95%
Overall Dimensions	1.5"x 5.2" x 6.3"
Product Weight (unpackaged)	14 oz
Video Output Signal Format	NTSC
Video Signal Level	1.0V p-p ; 75Ω
Audio	1.5 watt
Resolution	960(W) x 234(H)
View Angles	100°(H) 80°(V)
Brightness	500 nit
Contrast Ratio	250:1
Response Time	30ms(R) 40ms(F)
Display Format	4:3

## Specifications

## CAMERA

Power System	12VDC
Operating Voltage Range	10 ~ 18V
Power Consumption (MAX)	230 mA
Operating Temperature Range	-20°C to 65°C
Storage Temperature Range	-30°C to 85°C
Operating Relative Humidity	100%
Waterproof Rating	IPX6
Overall Dimensions	5.52"x 3"x 2.82"
Product Weight (unpackaged)	10.56 oz
Video Output Signal Format	NTSC
Video Signal Level	1.0V p-p ; 75Ω
Audio	Microphone
Sensor	1/3" CMOS
Sensitivity	0 Lux
Image Orientation	Mirror (Reversed)
Resolution	380 Lines
View Angles	135°(D) 102°(H) 72°(V)