

# Voyager<sup>®</sup>

Super CMOS Color Side Body  
Observation Camera

## VCMS12L/R



### PRODUCT FEATURES:

- High-performance color optics
- Waterproof (IPX6)
- 12 Volt DC Power
- 1.0 Lux
- Mirror Image
- Viewing angle: 131°
- Compact size
- Zinc alloy housing (available in gray, white, or chrome)
- Rubber lens cover
- Dimensions: 3.36" x 1.7" x 1.7"

EXPAND your vision<sup>™</sup>

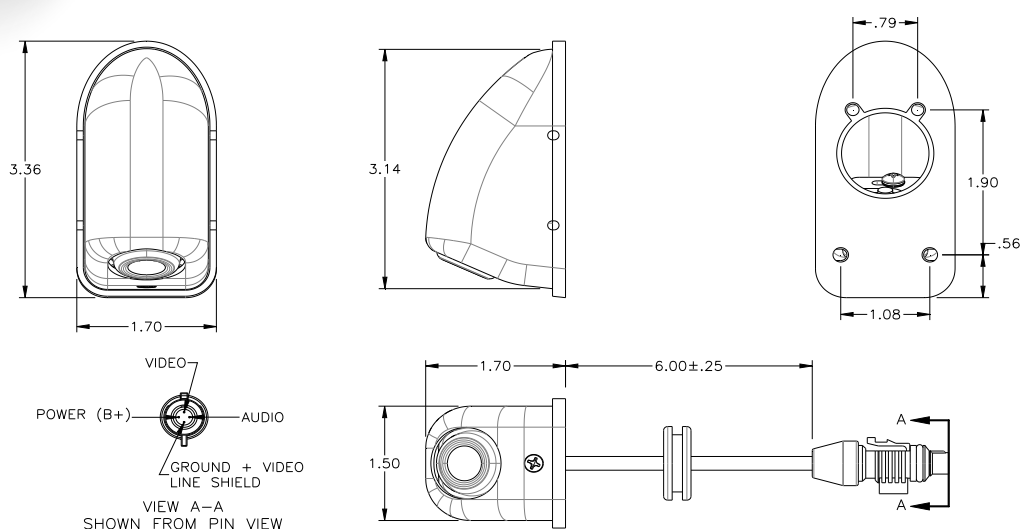
**asa**  
ELECTRONICS<sup>™</sup>

2602 Marina Drive • Elkhart, IN 46514  
[www.asaelectronics.com](http://www.asaelectronics.com)

# Voyager®

Super CMOS Color Side Body  
Observation Camera

## VCMS12L/R



### General Specifications:

Power System	12VDC	
Operating Voltage Range	9V – 15VDC	
Power Consumption	1W	
Operating Temperature Range	-22°F to 176°F	-30°C to 80°C
Storage Temperature Range	-40°F to 185°F	-40°C to 85°C
Operating Relative Humidity	100% RH	
Waterproof Rating	IP X6	
Overall Dimensions (without bracket)	3.36" x 1.7" x 1.7"	85.5 x 43 x 43mm
Product Weight (unpacked)	6.4 oz	182 g

### Optical Specifications:

Video Output Signal Format		NTSC
Video Signal Output Level		1.0V p-p ; 75Ω
CMOS Specifications	Sensor	1/3" CMOS
	Iris/Shutter Type	Electronic Automatic
	Shutter speed	1/60 s ~ 12 μs
	Resolution	320 TV Lines
	Sensitivity	1.0 Lux
	Image Orientation	Mirror
	View Angles	D 131°
		H 108°
		V 78°