

Voyager®

Super CMOS Color Rear Mount Observation Camera

VCMS10B



PRODUCT FEATURES:

- High-performance color optics
- Waterproof (IPX6)
- 12 volt DC power
- Image orientation: mirror (reversed)
- Machined aluminum body
- Excellent low light and bright daylight performance
- 12 IR LEDs
- Microphone
- Dimensions: 3.3" x 3" x 3"

EXPAND your vision™

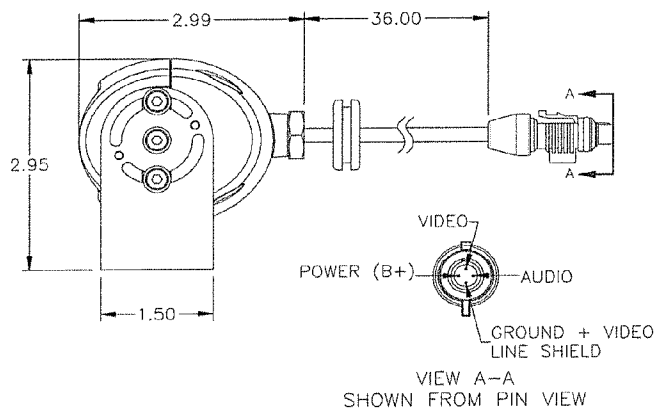
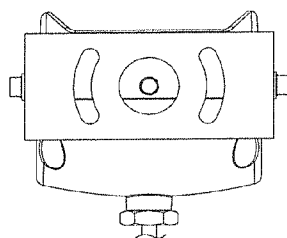
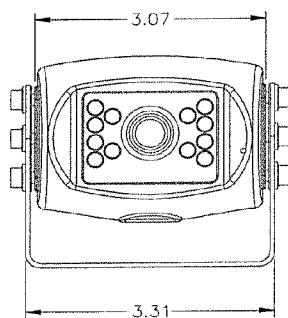
asa
ELECTRONICS™

2602 Marina Drive • Elkhart, IN 46514
www.asaelectronics.com

Voyager®

Super CMOS Color Rear Mount Observation Camera

VCMS10B



General Specifications

Power System	12VDC	
Operating Voltage Range	10V – 14VDC	
Power Consumption	224mA	
Operating Temperature Range	-4°F to 149°F	-20°C to 65°C
Storage Temperature Range	-40°F to 185°F	-40°C to 85°C
Operating Relative Humidity	100% RH	
Waterproof Rating	IPX6	
Overall Dimensions	3.3" x 3" x 3"	83.8 x 76 x 76mm
Product Weight (unpacked)	13 oz	369 g

Optical Specifications

Video Output Signal Format		NTSC
Video Signal Output Level		1.0V p-p ; 75Ω
Audio Output		YES
CMOS Specifications	Sensor	1/4" CMOS
	Iris/Shutter Type	Electronic Automatic
	Shutter speed	1/60 s ~ 12 μs
	Resolution	380 Lines
	Sensitivity	0 Lux
	Image Orientation	Mirror (Reversed)
	View Angles	D 127°
		H 93°
		V 66°