

Features:

- 175 watts
- Infinite baffle
- Speaker impedance: 4 ohms
- Mica filled PP cone
- Protected magnet and cone
- Santoprene surround
- Stainless steel terminals and mounting hardware
- Mounting gasket
- Meets ASTM B117 salt/fog and D4329 UV testing specifications
- Certifications: CEA, CE RoHs
- 9.125" mounting hole
- 4.7" mounting depth
- Optional LED lit kit available (UMSW1000LK1- Blue or White)

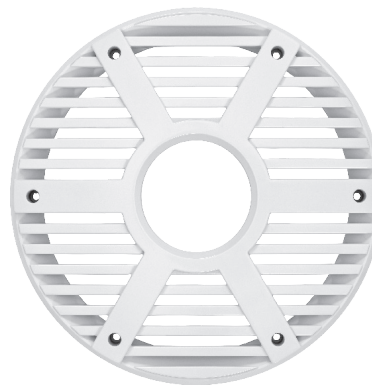


Selectable
Blue or White
LED Light Kit

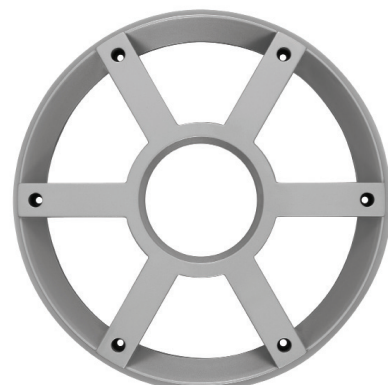
UMSW1000LK1



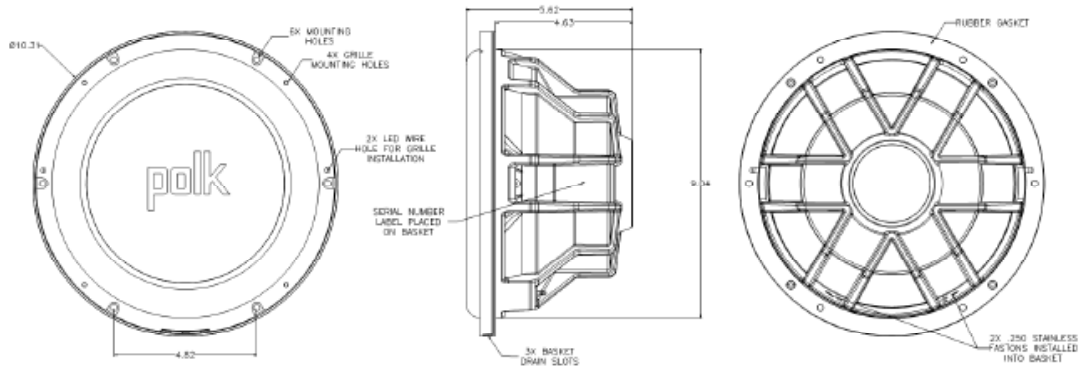
UMSW1000SGB



UMSW1000HGW



UMSW1000SGS



Specifications:	
General Specifications:	
Woofer Size	10"
Woofer Material	Poly-propylene
Surround Material	Santoprene
Voice Coil Size	2"
Magnet Weight	55.5 oz
Mounting Depth	4.63"
Hole Size	9"
Impedance	4 Ω
Temperature Range	-30°C - 70°C -22°F - 158°F
Max RH	100%
Terminal Size	Accepts .250 Fastons
Performance Specifications:	
Frequency Response	30 – 500 Hz
RMS Power Range	200 W
Max Power	400 W
SPL @ 1 W/ 1 M	87 dB
Resonant Frequency	45 Hz