

AM|FM|WB | USB | Bluetooth® Stereo [MS30BT]



KEY FEATURES:

- AM/FM
- Bluetooth (A2DP/AVRCP)
- 160 watts (40W x 4)
- Waterproof (IPX6)
- Rear USB input for MP3 enabled devices
- Rear AUX input (RCA)
- Rear line-out audio (RCA)
- Compact 3.5" diameter
- Daylight-readable segmented LED display
- Audio settings (Bass/Treble/Balance/Fader)
- Zero current memory draw
- Conformal-coated circuit boards
- Blue backlit controls (LED illumination)
- UV-resistant finishes/materials (ASTM D4329)
- Corrosion-resistant materials (ASTM B117)
- Simple user interface
- FCC/CE certified



JENAUX
USB Interface and 1/8" Auxilliary Input
(required to use USB and AUX inputs)

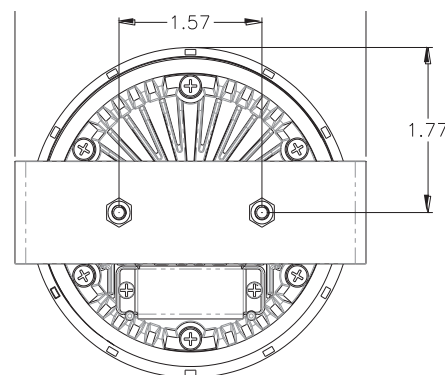
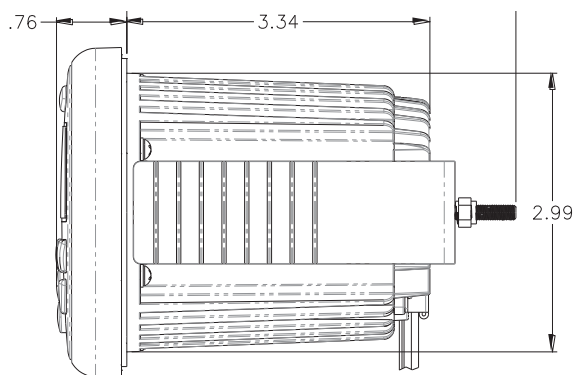
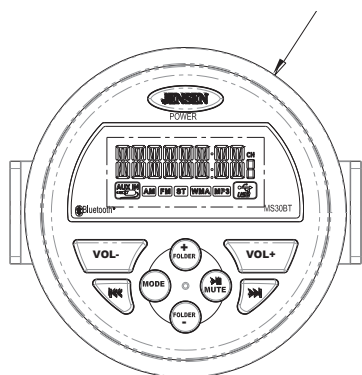
MARINE CERTIFIED

asa
ELECTRONICS
2602 Marina Drive • Elkhart, IN 46514
www.asaelectronics.com



DESIGNED TO MOVE [YOU]®

AM|FM|WB | USB | Bluetooth Stereo [MS30BT]



General Specifications

Power System		12 VDC
Operating Voltage Range		9 V to 16 V
Current Draw @ 12V	Quiescent	0 mA
	Standby	0.8 A
	Maximum	7.8 A
Water Resistance Rating		IPX6
Operating Temperature Range		-4°F to 149°F -20°C to 65°C
Storage Temperature Range		-22°F to 158°F -30°C to 70°C
Maximum Relative Humidity		100%
Overall Dimensions		3" Dia. x 4.3" Depth
Product Weight (unpackaged)		¾ lb.

Performance Specifications

FM Sensitivity		1 uV
AM Sensitivity		20 uV
Output Power	RMS	15 W x 4
	Maximum	40 W x 4
Total Harmonic Distortion @ 1 Watt		0.1%
Applied Test Suite		ASA ES0001
Regulatory Certification		FCC Part 15B; e-Mark; CE; c-Ti RoHS