



DVD | USB | AUX | HDMI | App Ready
Bluetooth® Wallmount Stereo

JWM72A



PRODUCT FEATURES

- App Ready - Control all primary functions of stereo from most Bluetooth-enabled devices with JENSEN jControl app
- Bluetooth streaming audio (A2DP) and controls (AVRCP)
- iPod/iPhone ready (via Bluetooth)
- Front USB supports playback of MP3 and WMA and 1 amp charging
- Plays CD/CD-R/CD-RW/DVD/DVD+R/DVD RW/DVD-R/DVD-RW/MP3
- jCOM HDMI interface with all JENSEN TVs automatically detects DVDs, simplifying operation
- 18 FM and 12 AM station presets
- Three Speaker zones (A/B/C) with independent volume control
- Eight speaker outputs (8 x 6W RMS; 4 ohm)
- A/V AUX input (front-3.5 mm)
- Audio AUX input (rear-RCA)
- Fixed RCA output and variable RCA output (rear)
- Two video outputs (HDMI, RCA)
- White LED backlit controls and LCD panel with 10 dimming levels
- Clock with alarm/sleep-timer
- 10.4" W x 3.75" H x 6.5"D

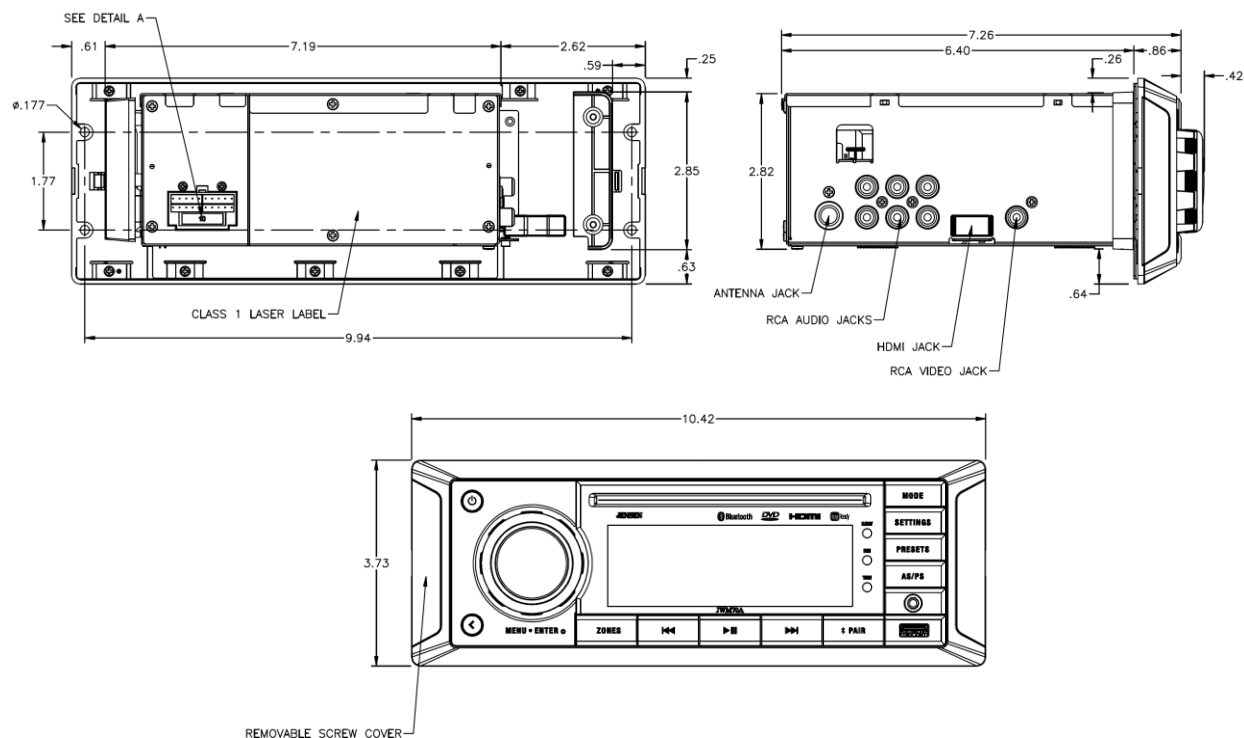
DESIGNED TO MOVE [YOU][™]

asa
ELECTRONICS®
2602 Marina Drive • Elkhart, IN 46514
www.asaelectronics.com

JENSEN®

DVD|USB|AUX|HDMI|App Ready
Bluetooth® Wallmount Stereo

JWM72A



Specifications

Power System		12 V DC (2-Wire)
Operating Voltage Range		10 V to 16 V
Current Draw @ 12V	Quiescent	0 mA
	Standby	115 mA
	Maximum	6.0 A
Operating Temperature Range		-4°F to 149°F -20°C to 65°C
Storage Temperature Range		-22°F to 158°F -30°C to 70°C
Maximum Relative Humidity		95%
Overall Package Dimensions		10.4"W x 3.75"H x 6.5"D
Product Weight (unpacked)		5 lbs.

Performance Specifications

FM Sensitivity	2 uV
AM Sensitivity	15 uV
CD Frequency Response	20Hz to 20kHz
CD Signal to Noise	79 dB
CD Skip Threshold (Random Freq. Profile)	3 seconds buffer
Speaker Level Power Output	8 x 6Wrms
Maximum Output Power	50 Watts Total
Total Harmonic Distortion	1 %
Applied Test Suite	ASA ES0001
Regulatory Certifications	FCC Part 15B, BT, Apple

Features and specifications subject to change without notice.