



50" LED AC Television
JE5015



PRODUCT FEATURES

- AC Power
- White LED Illumination
- High-performance LCD panel
- Integrated HDTV (ATSC) tuner
- 1920 x 1080p
- 16.7 million colors
- jCOM function with JENSEN HDMI-equipped DVD player
- VESA 200mm x 200mm mounting pattern
- Dual-function remote control included
- Stand available (STDJE5015)
- Dimensions: 44.5"W x 26.1"H x 3.1"D

INPUT/OUTPUTS

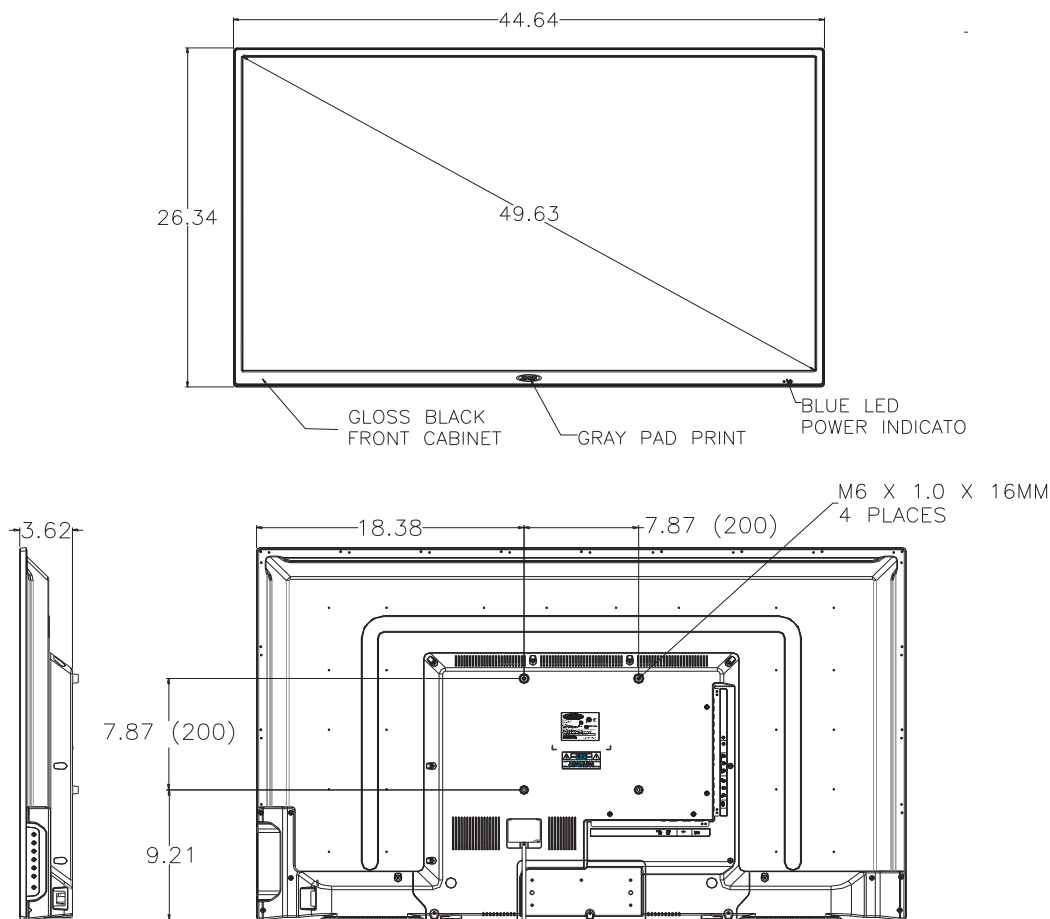
- Composite Video Input x 1 (NTSC/PAL compatible)
- Component Video Input x 1 (YPbPr)
- Stereo Audio Input x 1
- RF x 1
- USB x 1
- HDMI input x 2
- Line Level Audio Output (RCA) x 1
- Digital SPDIF Audio Output (RCA) x 1

DESIGNED TO MOVE [YOU][™]

asa
ELECTRONICS
2602 Marina Drive • Elkhart, IN 46514
www.asaelectronics.com



50" LED AC Television JE5015



Features:

- AC Power
- White LED Illumination
- High Performance Wide 16:9 LCD panel
- 1920 x 1080 FULL HD
- 16.7 Million Colors
- Integrated HDTV (ATSC) Tuner
- Inputs/Outputs
 - Composite Video Input x 1 (NTSC/PAL compatible)
 - Component Video Input x 1 (YPbPr)
 - Stereo Audio Input x 1
 - VGA with 3.5 mm Audio Input x 1
 - RF x 1
 - USB x 1
 - HDMI input x 3
 - Line Level Audio Output (RCA) x 1
 - Digital SPDIF Audio Output (RCA) x 1
- VESA 200mm x 200mm Mounting Pattern
- Dual function (TV & DVD) wireless remote control included
- Table Top Stand Optional (P/N STDJE5015)
- CEC function with AWM975 or other Jensen CEC-equipped HDMI DVD players
- JCOM function with JENSEN HDMI-Equipped DVD player
- ARC (Audio Return Channel) via HDMI

Specifications: Test Spec ES-0001 (Modified)

General Specifications:

| | | |
|-----------------------------|--|---------------|
| Power System | AC 110V, 60 Hz | |
| Power Consumption | 0.1 W stand by | 100 W max |
| Operating Temperature Range | 32°F to 122°F | 0°C to 50°C |
| Storage Temperature Range | -4°F to 140°F | -20°C to 60°C |
| Maximum Relative Humidity | 85% | |
| Overall Dimensions | 44.5" W x 26.1" H x 3.1" D (without stand) | |
| Product Weight (unpacked) | 30 lbs | |
| Regulatory Certification(s) | FCC, UL, CUL | |

Performance Specifications:

| | | | |
|--------------------------------|----------------|-----------------|-----|
| Video / Display System | | NTSC/ATSC/PAL | |
| Video Input Signal (Composite) | | 1Vp-p @ 75 ohms | |
| Audio Output | | 8W x 2 | |
| LCD Specifications | Diagonal Size | 50" | |
| | Resolution | 1920 x 1080 | |
| | Brightness | 350 nit | |
| | Contrast Ratio | 5000 : 1 | |
| | View Angles | Top | 88° |
| | | Bottom | 88° |
| | | Left | 88° |
| | | Right | 88° |
| | Display Format | 16:9 | |
| | Response Time | 8.5ms | |