

Voyager[®]

EXPAND your vision[™]

CVRPS14 REAR SENSOR SYSTEM



VISUAL/AUDIBLE ALERTS

When attached to a compatible monitor, this sensor gives both an audible and visual notification when it detects an object within range. The audible warning progressively beeps as objects approach the vehicle.

SIGNAL WARNING ZONES

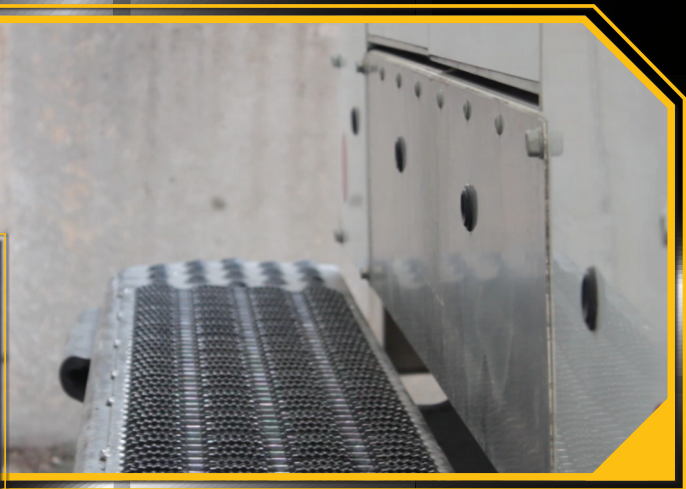
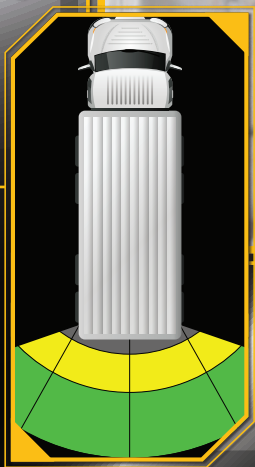
Showing three color warning zones, red, yellow and green, the sensor will alert the driver if an object is within a 9 foot proximity of the vehicle. Each color will represent 3 feet of space to give the driver depth of vision.

BACKUP SENSORS

This package includes four sensors that space evenly along the back of the vehicle to provide an accurate reading of the surrounding areas along with range of vision on the front monitor.

SELECTABLE GRAPHICS & TONES

With a compatible Voyager[®] monitor or JENSEN[®] stereo attached, drivers can select their preferred tone and screen graphics.



COMPATIBLE WITH

Voyager[®] MONITORS

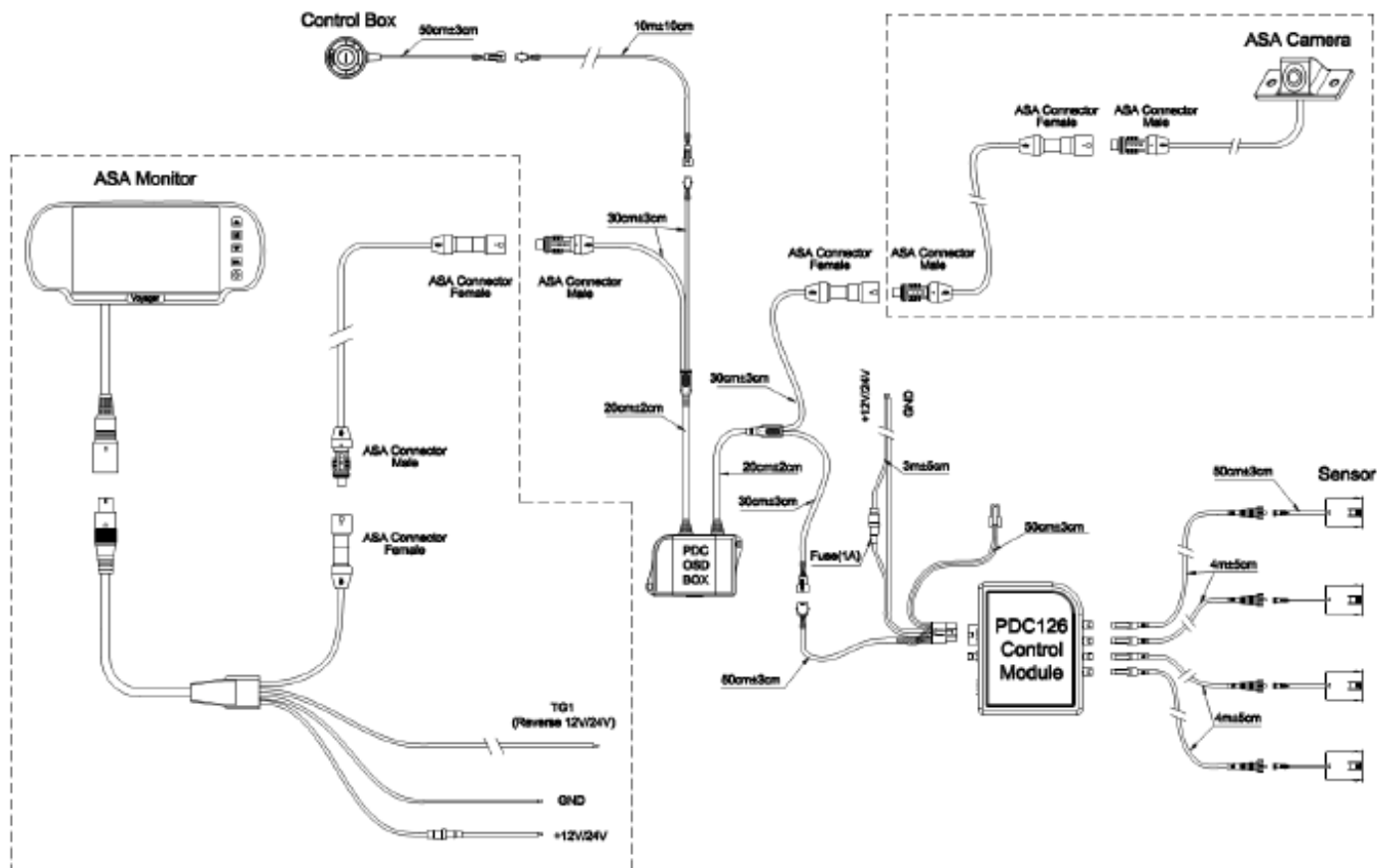
JENSEN[®] TONE SCREEN STEREO

*Must have camera input

DESIGNED FOR COMMERCIAL VEHICLE ENVIRONMENTS

asa
ELECTRONICS[™]
2602 Marina Drive • Elkhart, IN 46514
www.asaelectronics.com

For more information contact ASA Electronics at 800.688.3135 or visit www.asaelectronics.com.



- OSD (On Screen Display) Proximity Detection/Warning system with 4 bumper/body-mount sensors
- Provides both graphic and audio information/warnings to driver when approaching obstacles
- Designed specifically to be installed in-line with Voyager observation products (Plug and Play, CEC Connections)
- Camera output and OSD signals are combined into one NTSC video and analog audio output
- Compatible cameras: VCMS140i, VCMS155/VCMS155B
 - Note: Distance marker OSD is configured for these specific camera models. Use of other camera models with different FOV may result in inaccurate distance marker display.
- Adjustable settings allow accurate calibration for multiple vehicle applications (vehicle width, camera height, object detect range/offset)
- 4 Selectable OSD graphic display options
- Optional audio speaker/buzzer available (P/N: 31300157)
- Optional dense rubber sensor isolator kit available for metal bumper installation (P/N: 31300156)
- Sensitivity range 0-16" with solid beep & RED OSD marker , 16" – 42" with beep warning at ¼ sec interval with yellow OSD marker & 42" – 72" range with beep warning at ½ sec interval with Green OSD