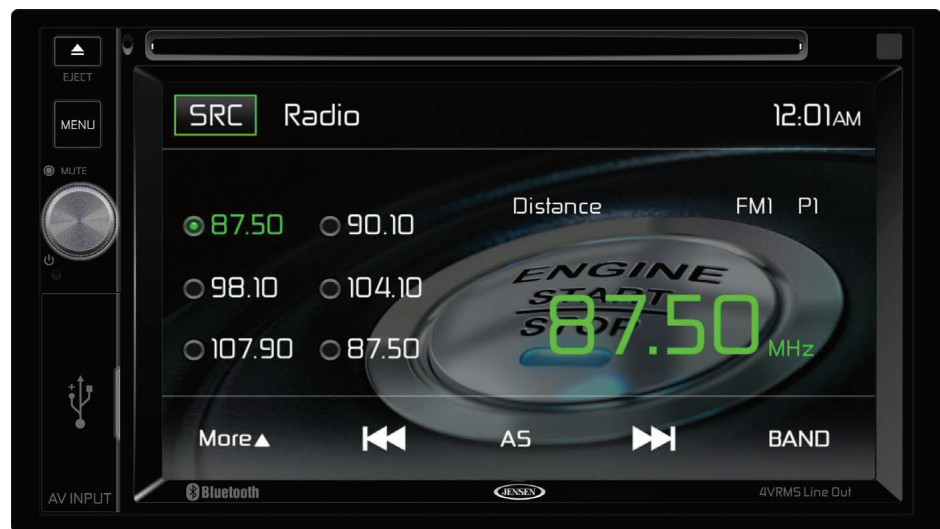




# VX4022A



## **What's in the Box**

The following items are supplied with the VX4022A:

- VX4022A Head Unit
- Trim Rings
- Hardware Bag
- Power/Speaker Output Harness
- Remote Control
- External Microphone
- Mounting Sleeve / Side Brackets
- Installation Guide / Warranty

## **Tools and Supplies**

The following tools and supplies are needed to install the VX4022A:

- Torx type, flat-head and Philips screwdrivers
- Wire cutters and strippers
- Tools to remove existing radio (screw driver, socket wrench set or other tools)
- Electrical tape
- Crimping tool
- Volt meter/test light
- Crimp connections
- 18 gauge wire for power connections
- 16 – 18 gauge speaker wire

**WARNING!** Never install this unit where operation and viewing could interfere with safe driving conditions.

## Optional Equipment

- Steering Wheel Control (SWC) Ready - The VX4022A SWC Interface is compatible with vehicles that utilize a resistive type SWC circuit. For SWC programming details, please see the operation manual.
- Rear Camera- The VX4022A is Rear Camera ready for vehicles equipped with the option. See wiring diagram for installation details.

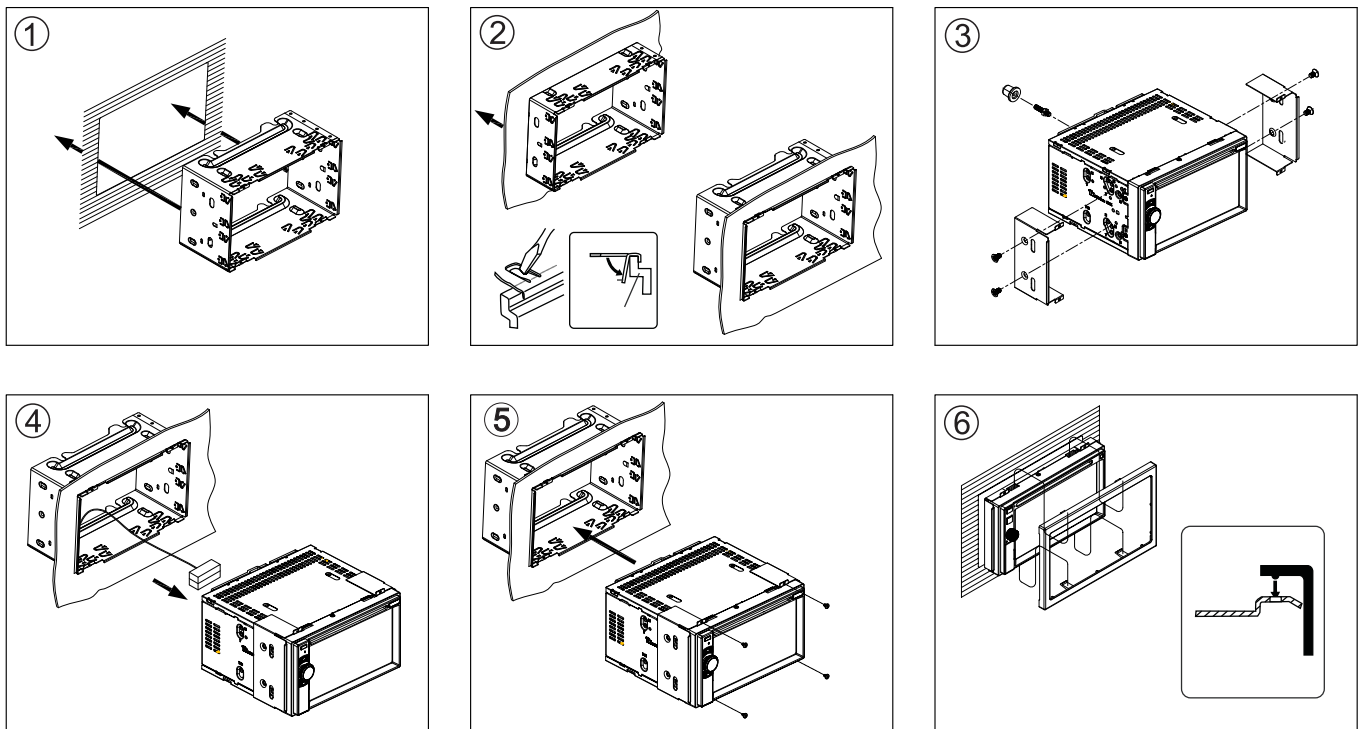
## Disconnect the Battery

- To prevent a short circuit, be sure to turn off the ignition and remove the negative (-) battery cable prior to installation.  
**NOTE: If the VX4022A is to be installed in a car equipped with an on-board drive or navigation computer, do not disconnect the battery cable. If the cable is disconnected, the computer memory may be lost. Under these conditions, use extra caution during installation to avoid causing a short circuit.**

## Replacing the Fuse

- When replacing the vehicles Radio fuse always use the proper rated replacement fuse. Using a fuse with an improper rating could damage the unit and cause a fire.

## ISO-DIN Installation



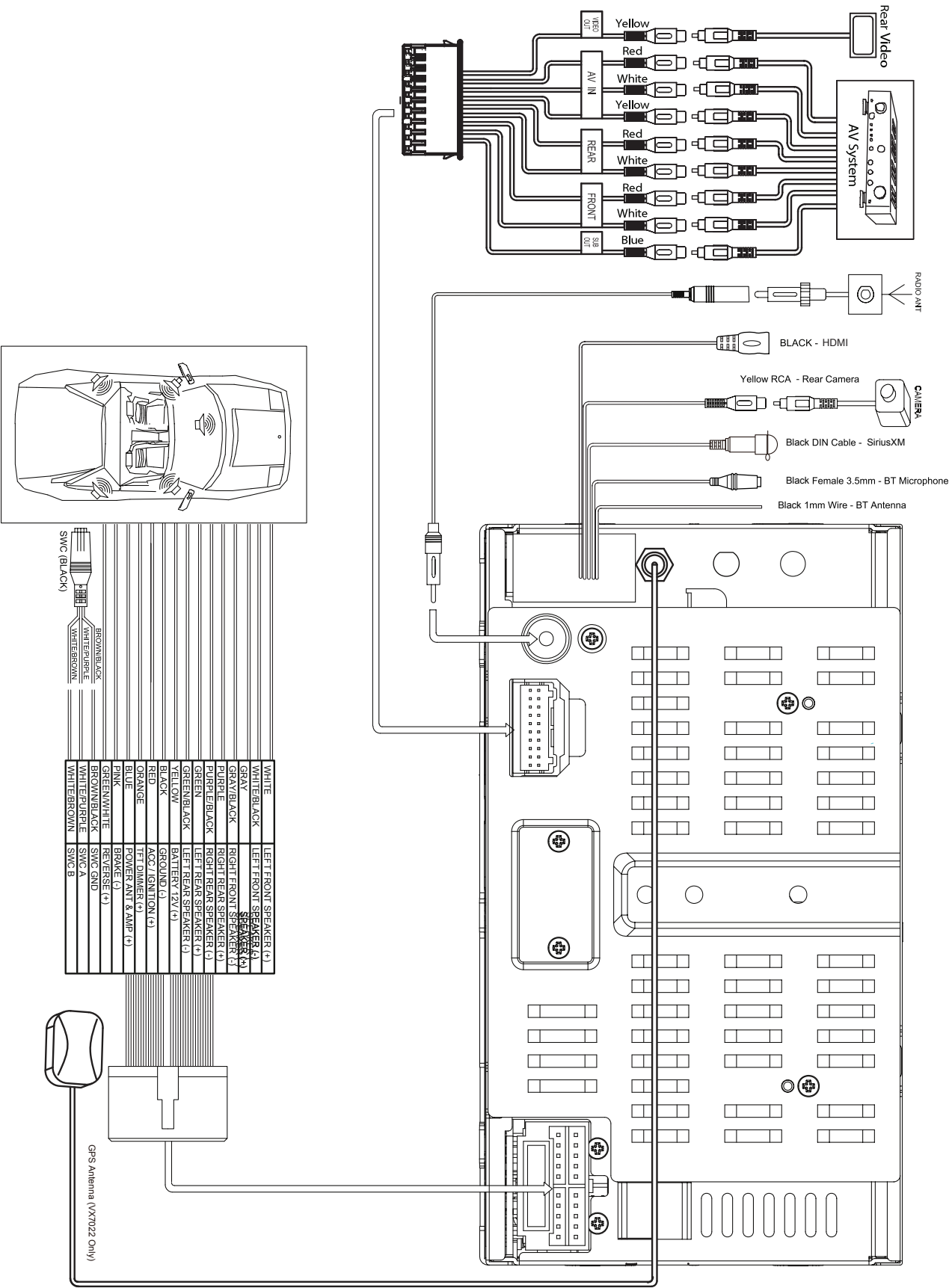
## Using the Cosmetic Trim Ring

A cosmetic trim ring is supplied with the head unit for installation flexibility. This unit will fit into most import dashes with little or no modification to the dash board/cavity. Some US domestic vehicle dashes will accept a Double-DIN chassis, but there is usually a small gap between the radio and dash piece after installation is complete. In this case, use the trim ring to conceal any gaps that may be present.

**NOTE: For proper operation of the CD/DVD player, the chassis must be mounted within 30° of horizontal. Make sure the unit is mounted within this limitation.**

# Wiring Diagram

**CAUTION! IMPORTANT:** Incorrect wiring connections can damage the unit. Follow the wiring instructions carefully, or have the installation handled by an experienced technician.



Some vehicles may not support all SWC functions. Professional Installation is recommended.



2602 Marina Drive, Elkhart, IN 46514

[WWW.ASAELECTRONICS.COM](http://WWW.ASAELECTRONICS.COM)

© 2015

Printed in China